

Monitoring

Permanent Shaft Power Measuring System

LEMAG®
SHAFTPOWER®

Displays the actual effective engine power output at any time.



Product features

- EEXI compliance
- Improve efficiency
- Protects from overload
- Protects from breakdown
- Optimize fuel consumption
- Improve Maintenance Scheduling
- Controls the effect of energy saving devices
- Safe, robust and reliable

LEMAG® SHAFTPOWER



LEMAG Shaftpower® to get EEXI compliance

The permanent shaft power measuring system, which displays the actual effective engine power output at any time will ensure EEXI regulatory compliance to ship operators. The actual shaft power output will be evaluated compared to the EEXI pre-defined power limit providing a detailed and recorded analysis of the exceptional overrides' events.



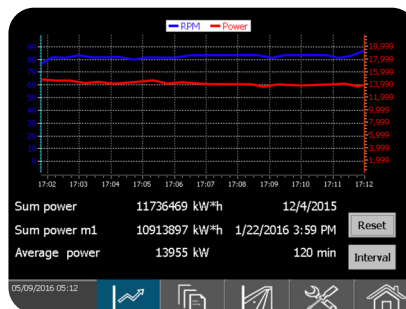
Measuring unit

The shaft twist is measured between a defined distance on the shaft, using two highly accurate linear precision position encoders.

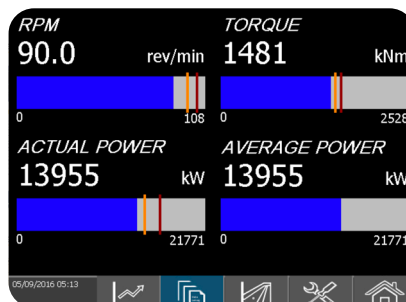
The measured data is digitalized in the rotating unit and transmitted contact-free to the processor unit.

Displays the actual effective engine power output at any time

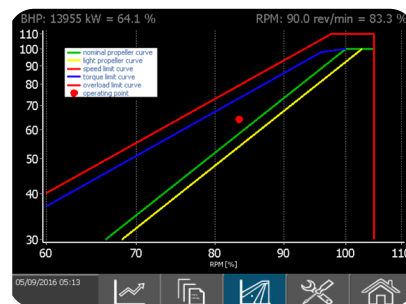
The LEMAG Shaftpower system gives an instant overview over RPM, power, torque and propeller curve.



Trend function



RPM, torque, power overview



Propeller curve

For further options including calculation of SFOC with external flowmeter, please contact us.

Includes the following features

• Touch screen operated	• Comparison with reference propeller curve
• Contact-free sensors	• RS-485, NMEA 0183 serial interface
• Maintenance free design	• Backlit touch-screen
• Easy to operate	• Direction of rotation
• Different measuring units	• Optional analogue outputs
• User-friendly zero calibration procedure	• Optional overload warning and alarm
• Display of actual shaft power, RPM, torque and average power	• Optional bridge display

Chris-Marine
Headquarters
and Subsidiaries

CHRIS-MARINE SWEDEN
HEADQUARTERS
Tel: +46 - 40 671 2600
info@chris-marine.com

CHRIS-MARINE DENMARK
Tel: +45 - 4498 3833
iop@chris-marine.com

CHRIS-MARINE GERMANY
Tel: +49 4101 5880 0
lemag@chris-marine.com

CHRIS-MARINE SINGAPORE
Tel: +65 - 6268 8611
chris@chris-marine.com.sg

CHRIS-MARINE CHINA
Tel: +86 - 21 6575 9331
info.cn@chris-marine.com

CHRIS-MARINE JAPAN
Tel: +81 - 78 570 5642
info.jp@chris-marine.com

CHRIS-MARINE INDIA
Tel: +91 - 712 224 2719
info.in@chris-marine.com

CHRIS-MARINE ECUADOR
Tel: +593 979 000 379
info.ec@chris-marine.com

CHRIS-MARINE USA
Tel: +1 786 212 9592
info.us@chris-marine.com

Contact one of our offices to get in touch with your local agent.